

s simply dummy text of the
typesetting industry. Lorem
in the industry's standard
ever since the 1500s, when an
ter took a galley of type and
to make a type specimen book.



NEXTGEN HEALTHCARE

HEALTHCARE CLUB
HARVARD BUSINESS SCHOOL
20TH ANNUAL CONFERENCE

MEDICINE
HEALTH
TREATMENT
DOCTOR
SURVEY
RECIPES

MEDICINE

Contrary to popular belief, Lorem Ipsum is not simply random text. It has roots in a piece of classical Latin literature from 45 BC, making it over 2000 years old. Richard McClintock, a Latin professor at Hampden-Sydney College in Virginia, looked up one of the more obscure Latin words, consectetur, from a Lorem Ipsum passage, and going through the cites of the word in classical literature, discovered the undoubtable source.

DEC 4TH, 2022
Harvard Business School

TABLE OF CONTENT

Welcome Letter	3
Agenda	4
Opening Keynote: Kiki Freedman, M.B.A.	5
Afternoon Keynote: Liz Kwo, M.D., M.B.A., M.P.H.	6
Closing Keynote: Sachin Jain, M.D., M.B.A., FCAP	7
Panel Group 1	
Panel 1: Diagnostics and Devices	8
Panel 2: One/Global Health	10
Panel 3: Health Equity and Social Determinants of Health	13
Panel Group 2	
Panel 4: Therapeutics and Biotech	16
Panel 5: Digital Health & Data	19
Panel 6: Mental Health	21
Panel Group 3	
Panel 7: Payers and Providers	24
Panel 8: Entrepreneurship and Investing	27
Panel 9: Aging and Regenerative Biology	29
Conference Leadership Team	31

W E L C O M E

On behalf of the Health Care Club at Harvard Business School, it is our pleasure to welcome you to the 20th Annual Health Care Conference: "NextGen Healthcare." We are honored that you are joining us today.

The healthcare sector has entered a period of rapid change. Longevity and the advance of new technologies and discoveries – as well as innovative combinations of existing ones – are among the many factors propelling patient empowerment, which is fundamentally changing how we prevent, diagnose and cure diseases. Additionally, the ever-changing landscape of healthcare entrepreneurship and investing is driving many of the decisions made in the healthcare space. And finally, there has been increased recognition that improving health and achieving health equity will require broader approaches that address social, economic, and environmental factors that influence health. We are excited to bring together leading subject matter experts, change-makers, and future leaders for a day of thought-provoking discussion and meaningful connections.

We would like to extend our special thanks to the many individuals that have contributed their time and talent to making this year's conference a success. To our keynote speakers, panelists, and moderators, thank you for your enthusiasm, your time, and your expertise. To our generous sponsors, the HBS Health Care Initiative, the HBS Health Care Alumni Association, and HBS faculty and staff, thank you for all your guidance and support in making this conference possible. To the students involved in organizing the conference, we are very grateful for your hard work and commitment. And finally, to all our attendees, thank you for joining us. We hope you enjoy the conference.

Sincerely,

Geraldine Pena-Galea & Vincent Defalque
Conference Co-Chairs
HBS MBA Class of 2023



AGENDA

Agenda subject to change. All events will be in person at the Harvard Business School campus

8:00 – 8:50am ET	Registration and Breakfast Networking
9:00 – 9:50am ET	Opening Keynote Kiki Freedman, Co-Founder and CEO, Hey Jane
10:00 – 10:50am ET	Panel 1: Diagnostics and Devices Panel 2: One/Global Health Panel 3: Health Equity and Social Determinants of Health
11:00 - 12:00pm ET	Roundtable Networking Lunch and AR/VR Demo
12:20 - 1:10pm ET	Afternoon Keynote Dr. Liz Kwo, CMO, Everly Health
1:20 – 2:10pm ET	Panel 4: Therapeutics and Biotech Panel 5: Digital Health & Data Panel 6: Mental Health
2:20 – 3:10pm ET	Panel 7: Payers and Providers Panel 8: Entrepreneurship and Investing Panel 9: Aging and Regenerative Biology
3:20 – 4:10pm ET	Closing Keynote Dr. Sachin Jain, President and CEO, SCAN Group and Health Plan
4:30 – 6:00pm ET	Closing Networking Reception



KEYNOTE

OPENING KEYNOTE 9:00 - 9:50 AM



Kiki Freedman, M.B.A.
Co-founder & CEO, HeyJane

Kiki Freedman is the CEO and Co-founder of Hey Jane, which she founded while at Harvard Business School. Prior to business school, Kiki was an early employee at Uber, where she took on a variety of roles including launching Uber in Kenya, spearheading key operational initiatives on the company's PRO team, and leading Strategy + Expansion for UberEats in the Middle East and Africa (MEA) region. She started her career as an Associate Consultant at Bain & Co, and graduated magna cum laude from Washington University with double majors in Economics and International Development.



Rembrand Koning, Ph.D. (Moderator)
Associate Professor of Business Administration, Harvard Business School

Rem Koning is an Associate Professor in the Strategy Unit at Harvard Business School. He studies how entrepreneurs build their firms and how to broaden the benefits of startup growth and innovation. His case writing and academic work have explored how entrepreneurs experiment and learn from one another in numerous contexts, including technology startups, women's health, firm hiring, entrepreneurship in developing economies, mental health, and scientific innovation.

AFTERNOON KEYNOTE 12:20-1:10 PM



Liz Kwo, M.D., M.B.A., M.P.H.

CMO, Everly Health

Dr. Liz Kwo has 20+ years of experience in building digital health and medical management companies, with a focus on using data analytics to transform health and wellness at scale. Currently she is the Chief Medical Officer of Everly Health, the digital health company at the forefront of the \$300 billion virtual diagnostics-driven care industry, with an aim to provide consumers access to at-home lab tests that include insightful, easy-to-understand results. Most recently, Dr. Kwo served as Deputy Chief Clinical Officer for Elevance (NYSE: ELV) to modernize disease management and care delivery for 43 million Americans covered under Medicare, Medicaid, and Commercial businesses. Prior to Elevance, Dr. Kwo started several venture backed companies as the CEO and co-founder of InfiniteMD (acquired by Consumer Medical, subsequently acquired by Alight (NYSE: ALIT) and President and co-founder of New Pathway Education and Technology Group (acquired by EIC Education). Her prior healthcare work includes supporting innovation at American Well (NYSE: AMWL), Medtronic (NYSE: MDT), and Third Rock.

Dr. Kwo is on the Board of Directors of Asensus (NYSE AMERICAN: ASXC), Walmart Mexico and Central America (Mexican Stock Exchange/BMV: WALMEX), BlueWind Medical and ChroniSense.

Dr. Kwo continued to see patients in urgent care at Cambridge Health Alliance Hospital, teach residents as a faculty lecturer at Harvard Medical School, and is board certified in Preventive Care and Occupational Medicine. She earned a BA in Human Biology from Stanford University, MD from Harvard Medical School, MBA from Harvard Business School, and an MPH from Harvard T.H. Chan School of Public Health.



Michael Langer (Moderator)

Head of Search, Evaluation & In-licensing/Acquisition. Pear Therapeutics

Co-founder & General Partner. Harvest.Bio

Michael is Head of Search, Evaluation & In-licensing/ Acquisitions at Pear Therapeutics (NASDAQ: PEAR). Michael reports to Pear's Founder and CEO Dr. Corey McCann. Pear Therapeutics discovers, develops, and delivers clinically-validated software-based therapeutics to provide better outcomes for patients, smarter engagement and tracking tools for clinicians, and cost-effective solutions for payers. Pear has raised over \$400M and recently went public via SPAC.

Michael also founded a fund called Old Silver VC which is a family-associated investment firm that invests in startups in Healthcare and Deep Tech with a focus on materials. To date, they have invested in over 20 companies including Big Hat Biosciences, ATAI Life Sciences, Seismic Therapeutics, Alto Pharmacy and Opentrons. He currently is Co-founder and General Partner at a new fund called Harvest.Bio which is investing in next generation companies at the intersection of biotech and tech.

Michael is an active philanthropist. He co-founded the Young Coder's Society which teaches children how to code using Raspberry Pi's. He is a World Economic Forum Global Shaper and a Young Leader at the Milken Institute. He serves on The Leadership Board at Beth Israel Deaconess Medical Center, on the Board of Advisors at the Museum of Science and is the Senior Advisor of Special Projects at the Galenus Foundation.

CLOSING KEYNOTE 3:20 - 4:10 PM



Sachin Jain, M.D., M.B.A., FACP

President & CEO, SCAN Group and Health Plan

Sachin (pronounced SUCH-in) H. Jain, MD, MBA is President and CEO of SCAN Group and Health Plan, where he is charged with leading the organization's growth, diversification, and emerging efforts to reduce healthcare disparities. SCAN's revenues top \$3.4B and the organization serves 220,000 patients.

Previously, Dr. Jain was President and CEO of CareMore and Aspire Health, innovative care delivery systems with > \$1.6B in revenues serving 200,000 Medicare and Medicaid patients and 2500 associates in 32 states. He pioneered the first clinical program in the world focused on social isolation. Dr. Jain is also an adjunct professor of medicine at the Stanford University School of Medicine and a contributor at Forbes.

Prior to joining CareMore, Dr. Jain was global Chief Medical Information & Innovation Officer at Merck & Co. He contemporaneously served as an attending physician at the Boston VA-Boston Medical Center and a member of faculties at Harvard Medical School and Harvard Business School. From 2009-2011, Dr. Jain worked in leadership roles at the US Department of Health and Human Services, where he was senior advisor to the administrator of the Centers for Medicare & Medicaid Services (CMS). Dr. Jain was the first acting deputy director for policy and programs at the Center for Medicare and Medicaid Innovation (CMMI). He also served as special assistant to the National Coordinator for Health Information Technology.

Dr. Jain is a respected thought leader in health care delivery. He is regularly recognized as a "Top 50 Most Influential Clinical Leader" and "100 Most Influential People in US Healthcare" by Modern Healthcare. In 2018, LinkedIn named him its top voice (#1) for healthcare.

Dr. Jain graduated magna cum laude from Harvard College with a BA in government and continued on to earn his MD from Harvard Medical School and MBA from Harvard Business School. He is a member of the Board of Directors of Abode Hospice and the Make-A-Wish Foundation. He trained in medicine at the Brigham and Women's Medicine and Harvard Medical School, earned his board certification from the ABIM, and continues to practice medicine. He is co-founder and co-editor-in-chief of the Elsevier journal Healthcare: The Journal of Delivery Science & Innovation and is an elected member of the National Academy of Social Insurance (NASI). He is an Aspen Institute Health Innovator's Fellow and a Paul and Daisy Soros Fellow.



Robert Huckman, Ph.D.

Albert J. Weatherhead III Professor of Business Administration, Harvard Business School

Robert Huckman is the Albert J. Weatherhead III Professor of Business Administration at Harvard Business School, the Howard Cox Faculty Chair of the HBS Healthcare Initiative, and the Unit Head for Technology and Operations Management. He currently teaches the second-year MBA course entitled Transforming Health Care Delivery and has previously taught both required and elective courses in Technology and Operations Management. Professor Huckman is the Faculty Chair of HBS' executive education program entitled **Managing Health Care Delivery**. He is also a Research Associate at the National Bureau of Economic Research and the Co-Chair of the management track of Harvard's doctoral program in health policy.



PANEL 1 10:00 - 10:50AM | ALDRICH 108

DIAGNOSTICS & DEVICES



Peter Stebbins (Moderator)

Nurami, Executive chair, Ex-J&J

Peter currently is a Board member and CEO advisor to several medical device and medtech companies. Starting as a summer intern in Operations at J&J, Peter worked across the major segments (Surgery - Ethicon, Orthopedics - DePuy Synthes, Interventional - Cerenovus, etc) in a range of functions - Ops, Sales, Mktg, European Mktg, Business Development, Strategy and J&J Innovation. He is active on the HBS HC Alumni Association Board and is emeritus board member of MassMEDIC. Lives in the South End.



Brandon Burke

Founder/CEO, LegWorks

Brandon Burke is the Co-Founder & CEO of LegWorks, a for-profit social enterprise revolutionizing access to high-quality prosthetic devices for amputees around the world. LegWorks has helped thousands of amputees walk with confidence on its innovative and patented prosthetic knees. Brandon has experience working in product, strategy, regulatory, sales, and ops functions of the business and uses a LegWorks knee as part of his own prosthesis.



Sam Chai, Ph.D.

Head of Diagnostics, Ro

Sam Chai currently leads the Diagnostics platform team at Ro, a direct to patient digital healthcare provider. Prior to Ro he spent time as a scientist and strategist in the medical device industry. He received his B.S. in Neuroscience from Vanderbilt University and his PhD in Physiology and Biophysics from Case Western Reserve University.



Neil Ray, MD

Founder/CEO, Raydiant Oximetry, Inc.

Dr. Neil Ray, MD is a board-certified pediatric anesthesiologist and the CEO/Founder of Raydiant Oximetry, Inc. Raydiant Oximetry is a medical device company with the mission to improve outcomes for mothers and babies during childbirth by developing a better fetal monitor. Dr. Ray has been awarded over \$2 million dollars of federal SBIR grants from the National Institutes of Health (NIH) and the National Science Foundation (NSF). In addition, he has raised \$12 million dollars of Series A financing from private investors. He is a named inventor on over 50 patents applications and the technology was awarded breakthrough medical device status from the FDA for expedited market approval. Dr. Ray was nominated for physician entrepreneur of the year in 2021 by the Society of Physician Entrepreneurs.



Anna Young

Founder/CEO, MakerHealth

MakerHealth CEO, Anna Young, works from a fundamental belief that, with the right tools, everyday people can use their ingenuity to create devices that heal. Applying years of global experience with the Maker Movement, Anna brings prototyping tools and makerspaces into hospitals to enhance the natural do-it-yourself problem-solving abilities of clinicians and patients. Anna is the co-founder of MakerNurse, a Robert Wood Johnson Foundation (RWJF) sponsored program to empower and support inventive, frontline nurses who innovate, and hopes to bring nurse “making” to the forefront of healthcare solutions. Anna’s roots come from the Massachusetts Institute of Technology (MIT) as researcher in the Little Devices Lab and lecturer in the Institute for Medical Engineering and Science. Anna has spoken at TEDMED, WIRED Health, and leading academic medical centers on the topic democratized medical device fabrication and user innovation. In 2015, she was recognized by LinkedIn as a “Top Health Innovator Under 35” and in 2016 received Fast Company’s “Most Creative People in Business”.



PANEL 2 10:00 - 10:50AM | ALDRICH 109

ONE / GLOBAL HEALTH



Rifat Atún, M.D.

Professor of Global Health Systems, Harvard University

Dr. Rifat Atun is Professor of Global Health Systems and the Director of Global Health Systems Cluster at Harvard T.H. Chan School of Public Health. Professor Atun's research focuses on the design and implementation of health systems reforms and their impact on outcomes. His research also explores adoption and diffusion of innovations in health systems (e.g. health technologies, disease control programmes, and primary healthcare reforms), and innovative financing in global health. Organization. Prof. Atun is a co-Investigator and the joint lead for the innovation work stream at the [National Centre for Infection Prevention and Management](#) at Imperial College. He is also a co-Investigator and the Theme Lead for 'Organisational Change, Sustainability and Evaluation' at Imperial College and Cambridge University Health Protection Research Unit for Antimicrobial Resistance and Healthcare Associated Infection. He has published widely in the Lancet, PLoS Medicine, Lancet Infectious Diseases, BMJ, AIDS, and Bulletin of the World Health Organization.

Prof. Atun has worked with several governments globally as well as the World Bank, World Health Organization, and the UK Department for International Development to design, implement and evaluate health system reform initiatives. He has led research and consultancy projects for GSK, Pfizer Inc., the Vodafone Group, Hofmann La Roche, PA Consulting, and Tata Consulting Services.



Joan Larovere, M.D., M.B.A.

Assistant Professor of Pediatrics, Harvard Medical School
Co-founder & VP, Virtue Foundation

Dr. Joan LaRovere is an Assistant Professor of Pediatrics at Harvard Medical School and the Director of Innovation and Outcomes and Attending Physician in the Division of Cardiac Critical Care at Boston Children Hospital. Dr. LaRovere is Co-Founder and Vice-President of Virtue Foundation, an NGO with Special Consultative Status to the United Nations, where she is focused on a data-driven, evidence based approach to development. A byproduct of the Virtue Foundation Actionable Data Initiative, Dr. LaRovere has published two books in global health and launched the VF Match Platform (vfmatch.org), an innovative technology platform that intelligently matches need and resources in the healthcare sector of 72 low and middle income countries and provides insights. Its primary goal is to reduce inefficiencies in the delivery of healthcare by matching the needs of underserved populations around the world with the resources of governments, non-profits, companies and individuals.



Darius Shahida, M.B.A.

Chief Strategy Officer and Chief Business Development Officer, Butterfly

Darius is Chief Strategy Officer and Chief Business Development Officer (SVP) at Butterfly Network, where he leads the company's strategy, M&A, fundraising, business development, and new business ventures (Vet & Global Health). In 2018, and while a student at Harvard Business School, Darius raised \$250 million dollars for Butterfly Network - the largest medical imaging raise in history. In 2020, Darius led and negotiated Butterfly's \$1.5BN Enterprise Value merger with Longview Acquisition Corp., which resulted in the public listing of "BFLY" on the NYSE in Q1 of 2021. Since he joined Butterfly / 4Catalyzer in 2018, Darius has led over \$1 Billion in capital raising. Prior to attending Harvard Business School, Darius was Head of Trading at Birch Grove Capital, and built the Cross Asset Special Situations Desk at Morgan Stanley. He is a former professional Opera singer, speaks five languages, holds three passports and has lived and worked in New York, London, Buenos Aires and Sao Paulo.



Claire Wagner, M.D., M.B.A.

Head of Corporate Strategy, Bill & Melinda Gates Medical Research Institute

Claire M. Wagner, M.D., M.B.A. is Head of Corporate Strategy at the Bill & Melinda Gates Medical Research Institute where she serves on the CEO's Executive Leadership Team driving forward the Institute's mission through enterprise-level and long-range strategy. Prior to her role at the Gates MRI, Claire led multi-country studies and consulted for industry and non-profit entities focused on enhancing global access to products and services in low- and middle-income countries. From 2010 to 2013, she served on the research teams of Dr. Agnes Binagwaho and Dr. Paul Farmer in Kigali, Rwanda advancing public sector health initiatives. For an effort chaired by the Dana-Farber Cancer Institute and the Union for International Cancer Control, Claire coordinated the 2015 revision of the World Health Organization's Model List of Essential Medicines for cancer resulting in the addition of 16 pharmaceutical products. As a research fellow of the Harvard Center for Global Health Delivery - Dubai in 2018-19, she was principal investigator on a study evaluating access to cancer diagnostics in the East African Community.

Claire is the recipient of The Commonwealth Institute's 2021 Extraordinary Women Advancing Healthcare Award. She is an associate scientist in medicine in the Division of Global Health Equity at the Brigham and Women's Hospital and is a co-author of more than 40 scientific publications in peer-reviewed journals, including Nature, The Lancet, and The New England Journal of Medicine. Claire earned her M.D. from Harvard Medical School and her M.B.A. from Harvard Business School, where she was the Commencement Class Day Speaker.



Meg Wirth, M.P.A.

Founder & Chief of Strategy, Maternova

Meg Wirth is the Founder of Maternova, a platform speeding the path to market for medical innovations increasing the odds of maternal and neonatal survival in childbirth. The impact-driven company creates a path to market in the emerging and developing economies where women are at highest risk. Novel devices to address postpartum hemorrhage, eclampsia and sepsis as well as rapid diagnostics for a wide range of infections are priority innovations.



PANEL 3 10:00 - 10:50AM | ALDRICH 111

HEALTH EQUITY & SOCIAL DETERMINANTS OF HEALTH



Hui Cheng (Moderator)
Investor, Town Hall Ventures

Hui is a Vice President at Town Hall Ventures, a healthcare venture capital fund investing in visionary entrepreneurs seeking to transform US healthcare for underserved communities. Town Hall's early investments include Cityblock, VillageMD, Unite Us, Somatus, and Eleanor Health. Hui works closely with a number of Town Hall's portfolio companies in behavioral health and value-based specialty care. Hui is passionate about diversity & inclusion and launched Town Hall's inaugural venture fellowship and previously served on the NYC board of Synergist Network, an organization focused on driving gender parity in investing. Prior to Town Hall, Hui worked at Bain & Company in their healthcare & private equity practices and led business operations at a seed-stage civic tech startup. Hui is a graduate of Dartmouth College.



Jatin Dave, M.D., M.P.H.
Chief Medical Officer, MassHealth

Dr. Jatin Dave is the Chief Medical Officer at MassHealth, Massachusetts's state Medicaid agency, and the Children's Health Insurance Program (CHIP). He is the primary clinical liaison between MassHealth and Commonwealth Medicine. As CMO, he provides medical, clinical, policy, and strategic oversight of all healthcare services for MassHealth members and represents the program on clinical matters. Dr. Dave joined Commonwealth Medicine and MassHealth from New England Quality Care Alliance, where he served as CMO. At Tufts University School of Medicine, he was an assistant clinical professor and served as Medical Director of Geriatrics and Senior Care Options at Tufts Health Plan. Dr. Dave served as a physician at Brigham and Women's Hospital. Dr. Dave is a member of the Medical Scientific Council of Massachusetts/ New Hampshire Chapter of the Alzheimer's Association. He completed a fellowship at New York University and a fellowship in geriatric medicine at Harvard. He also graduated from the Harvard School of Public Health.



Esther Farkas, J.D.
Chief Strategy Officer, UniteUs

Esther is the Chief Strategy officer at Unite Us, an outcome-focused technology company that builds coordinated care networks of health and social service providers, ensuring that everyone has access to the care they need, right in their communities. Esther focuses on corporate growth and expansion through strategic partnerships and acquisitions. She oversees corporate development, strategy, and legal and serves on the Unite Us board of directors. Esther is leading Unite Us on its path to becoming a generational company that's transforming the care delivery system and ensuring that one day, zip code will no longer determine a person's health.



Lisa Fitzpatrick, M.D., M.B.A., M.P.H.
Founder & CEO, Grapevine Health

Dr. Lisa Fitzpatrick is a board-certified infectious diseases physician and a medical epidemiologist. She began her public health career in 1998 as a member of the CDC's elite Epidemic Intelligence Service. She has served as a foreign diplomat in the Caribbean, an academic researcher, and the former chief medical officer for the DC Medicaid program. Dr. Fitzpatrick is a member of the Institute of Medicine/ National Academy of Sciences Roundtable on Health Literacy and an Aspen Institute Health Innovator Fellow. She is the founder and CEO of Grapevine Health, a digital health media company she established to build trust and improve patient engagement among Medicaid patients through delivering culturally appropriate and relatable health information.



Sara Greenbaum, M.B.A.

Head of Care Operations, Waymark

Sara Greenbaum is the Head of Care Operations at Waymark, a public benefit corporation providing community-based, tech-enabled healthcare services for Medicaid beneficiaries, in partnership with primary care providers and health plans. Prior to that, Sara served as a Regional Vice President at Eleanor Health, a value-based addiction, and mental health company, and as the Interim Chief Growth Officer at Beacon Health Options, a specialty behavioral health organization. Previously, Sara served as a Senior Director of Health Services at CVS Health, where she led the planning and execution of the HealthHUB concept stores. Sara is a graduate of the Harvard Business School. Prior to graduate school, Sara served as the Chief Strategy Officer of the Clinton Climate Initiative.



Micheal Tang, M.D., M.B.A.

Head of Behavioral Health, CityBlock

Dr. Michael Tang is the Head of Behavioral Health at CityBlock, a transformative, value-based healthcare provider for Medicaid and lower-income Medicare beneficiaries that provides behavioral, social, and clinical services. Previously, Dr. Tang served as the Chief Behavioral Health Officer at The Dimock Center, which delivers integrated health and human services to Boston's underserved neighborhoods. Dr. Tang has previously taught at the Harvard Medical School and served as a fellow at Massachusetts General Hospital. He graduated from Harvard Medical School and received his MBA from Brandeis University.



PANEL 4 1:20-2:10PM | ALDRICH 108

THERAPEUTICS & BIOTECH



Paul Clancy, M.B.A. (Moderator)

Former CFO, Biogen, Alexion

Paul has worked in the biotech industry for the last twenty-two years. He worked at Biogen from 2001-2017, serving as the Chief Financial Officer from 2007 through 2017. At Biogen, Paul oversaw rapid growth in the company as it expanded its products and pipeline. During his tenure as CFO, Biogen grew total return to shareholders at a 20% compound annual growth rate - the top decile of S&P 500 companies. He also served as the CFO at Alexion Pharmaceuticals from 2017-2019. He has broad financial & strategic experience in strategic planning, financial management, capital allocation, M&A, business development, and investor relations. Paul worked for PepsiCo earlier in his career across finance, strategy, and general management roles.

Paul has been recognized in the top three of Biotech CFOs in the Institutional Investor annual survey in all years from 2011-2020. He was awarded number five 'Top CFO' in the inaugural ranking of Best CFOs, across all industries, by the Wall St Journal. Paul was also awarded honorable mention by Women in the Enterprise of Science & Technology (WEST) in 2018 in the category of "Guys Who Get It".

He currently serves as a member of the Board of Directors at Incyte Pharmaceuticals, Exact Sciences, Agios Pharmaceuticals, and Xilio Therapeutics. He also serves on the Finance Committee for Catholic Charities of Boston.

Paul is an Executive Fellow at Harvard Business School providing support in finance classes, the Joint MS/MBA in Life Sciences program, and providing career perspectives to students. He also is a Visiting Senior Lecturer of Finance at the SC Johnson Graduate School of Business at Cornell.



Allison August, M.D.
Chief Medical Officer, Comanche Biopharma



Brian Goodman, Ph.D.
Principal, MPM Capital

Dr. Brian Goodman is on the investment team at MPM Capital and BioImpact Capital, an affiliate manager of MPM, and is responsible for new company creation, investment identification, due diligence, and business development. He is a serial entrepreneur who co-founded Aktis Oncology and ReNAGade Therapeutics; Brian played key leadership roles in their early stages as Chief Operations Officer at Aktis Oncology and Head of Business Development at ReNAGade. He also led initial diligence on Orna Therapeutics, played an instrumental role in growing the company as VP of Business Development, and now serves as a member of the Board of Directors.

Previously, Brian co-founded Evelo Biosciences (NASDAQ: EVLO) and served as Head of Technology and Innovation. At Evelo, Brian led a team that established new programs to discover, formulate, and evaluate the pharmacology of microbial drugs across multiple therapeutic areas. He contributed to the in-licensing of foundational IP and forged collaborative research with multiple academic groups to complement Evelo's internal research and development efforts. He is an inventor on multiple patent applications. Before taking the operational role at Evelo, Brian was a Senior Associate at Flagship Pioneering where he worked with the entrepreneurial division to build and launch new biotech ventures.

Brian holds a Ph.D. in Biological Chemistry and Molecular Pharmacology from Harvard Medical School, and B.S. and B.A. degrees in biochemistry and economics, respectively, from Brandeis University.



Bill Sibold, M.B.A.

EVP, Global Head Specialty Care, Sanofi

Bill Sibold is responsible for building Sanofi's global leadership position in Specialty Care, with a focus on immunology, neurology, oncology, rare diseases and rare blood disorders, and oversees the global launch strategy for key products. In his role as President, Sanofi North America, Bill leads the coordination of Sanofi's business in North America, across all global business units and functions.

Bill has more than 25 years of experience in the biopharmaceutical industry. He began his career with Eli Lilly and then held several leadership positions within Biogen, including driving its US commercial operations in neurology, oncology and rheumatology. He also served as Chief Commercial Officer at Avanir Pharmaceuticals. Bill joined Sanofi in 2011 as Head of the Multiple Sclerosis franchise. In January 2016, he became Head of Sanofi's Global Multiple Sclerosis, Oncology and Immunology organization. He was appointed to his current position in 2017.

Bill holds an MBA from Harvard Business School and a BA in Molecular Biophysics and Biochemistry from Yale University.

Bill is a husband and the father of three children. He loves sports and is a big New England Patriots fan (American football).

"We have to be focused on the science, focused on the patients—that is the core of what we do. If we do that right, we can ultimately be successful"



R. Nolan Townsend, M.B.A.

CEO, LEXEO Therapeutics

R. Nolan Townsend has served as LEXEO Therapeutics Chief Executive Officer and member of the Board of Directors since January 2020. LEXEO Therapeutics is a New York City-based, clinical stage biotechnology company that aims to apply the transformational science of gene therapy to address some of the world's most devastating genetic diseases.

Prior to LEXEO, Mr. Townsend held roles as President, Pfizer Rare Disease for the North America region and President, Pfizer Rare Disease for the International markets; overseeing overall strategy, the cross functional organization and operating budget in those regions. Mr. Townsend has over a decade of experience with Pfizer first joining the company in Corporate Finance and subsequently in roles of increasing responsibility across Corporate Finance, Corporate Strategy, Operations, Marketing, General Management and Commercial leadership in Pfizer's New York headquarters, Asia, Africa/Middle East and Europe. Prior to Pfizer, Mr. Townsend worked in the healthcare investment banking group at Lehman Brothers, advising healthcare companies on strategic financing transactions and mergers and acquisitions.

Mr. Townsend serves on the New York City Economic Development Corporation's Life Sciences Advisory Council and as the Chairman of the Board of Directors of Life Science Cares New York.

Mr. Townsend received his Masters in Business Administration from the Harvard Business School and his Bachelor of Arts in Economics from the University of Pennsylvania.



PANEL 5 1:20-2:10PMAM | ALDRICH 109

DIGITAL HEALTH & DATA



Rebecca Karp (Moderator)

Professor of Business Administration, Harvard University

Rebecca Karp is an Assistant Professor in the Strategy Unit at Harvard Business School. She teaches Strategy in the MBA required curriculum. Professor Karp is a field researcher and ethnographer. Her research examines how companies formulate and execute strategies for growth. In particular, she focuses on the role innovation and differentiation play in product development, integration, strategy execution, and organizational change. Professor Karp's research spans the healthcare, financial services, video gaming, media and creative industries. She has also studied how large companies and entrepreneurs can develop and implement AI technologies to reshape their competitive differentiation. Prior to HBS, Professor Karp served as a Principal at Booz and Company. Her portfolio of clients included Yum Brands, Nestle, JP Morgan, Goldman Sachs, State Street, Barclays, Citibank and other financial institutions. She has also worked with non-profits including the Screen Actors Guild and Boston Partners in Education. She was a board member of Symphony NH.



Ran Balicer, M.D., Ph.D., M.P.H.

Founding Director & Chief Innovation Officer, Clalit Research Institute

Prof. Ran Balicer is a physician, scientist and executive, Chief Innovation Officer for Clalit - Israel's largest healthcare organization that cover over half Israel's population. He also serves as Founding Director of the Clalit Research Institute, the WHO Collaborating Center on Non-Communicable Diseases Research, Prevention and Control. In these roles, he is responsible for strategic planning, development and implementation at scale of novel AI and data-driven interventions. Prof Balicer is Full Professor and Track Director of the MPH program at the Ben-Gurion University School of Public Health, and heads Israel's first and only Public Health/Data Sciences combined physician residency program, at Clalit. Since 2020, Prof. Balicer serves as Chairman of Israel's National Experts Team on COVID-19 Response, which advises the Israeli Government and Prime Minister. He has led globally recognized groundbreaking real-world studies on COVID-19 risk stratification, mitigation strategies, vaccine effectiveness and safety.



Erika Glenn

VP & General Manager, Care Management, CVS Health

Erika Glenn is an award-winning healthcare executive with a unique blend of expertise across care management, business development, IT strategy, and solution development. Leveraging her background, Erika is a passionate champion for the end-to-end client experience with an emphasis on member-centric innovation and value-driven solutions.

As the VP and General Manager, Care Management for CVS Health, Erika is responsible for P&L management, product innovation, product management, operations, sales, commercialization, and measurement. Her portfolio spans from population health solutions such as adherence and quality to disease specific programs such as diabetes and rare and complex conditions.

Prior to CVS, Erika spent 9 years with a health system in the southeast serving in positions ranging from IT to revenue cycle management. Beyond her professional responsibilities, she is a mother of 3, a wife, and travel enthusiast.



Scott Lipnick, Ph.D.

Senior Principal, Flagship Pioneering

Scott Lipnick joined Flagship Pioneering in 2021 as a senior principal focused on innovation around detecting and intervening against major diseases prior to traditional clinical diagnosis or major changes in symptomology.

Prior to Flagship, Scott served as the vice president of life and data science at PatientsLikeMe - initially a subsidiary of UnitedHealth Group R&D and later Optum Ventures - where his team focused on generating and analyzing real-world and multi-omics data collected from individuals at key inflection points in disease onset and progression.

Before entering industry, Scott was a faculty member at the Harvard School of Medicine, Department of Biomedical Informatics and the Massachusetts General Hospital Center for Assessment Technology and Continuous Health. He also held affiliate positions at the Broad Institute, the Harvard Stem Cell Institute and the Harvard University Department of Stem Cell and Regenerative Biology. His research aimed to extract value from data captured within insurance claims, electronic health records, and genomics using machine learning and artificial intelligence. Scott's publications relate to advancing the understanding of disease onset and progression, identifying people at risk of disease before major clinical presentation, determining who will respond to a given intervention, and exploring druggable pathways that underlie specific forms of disease.



PANEL 6 1:20 - 2:10PM | ALDRICH 111

MENTAL HEALTH



Kana Enomoto (Moderator)

Director, Bain Health for McKinsey Health Institute

Kana Enomoto is director of brain health for the McKinsey Health Institute and co-leads McKinsey's behavioral health domain where she integrates knowledge of mental health and substance use policy and research perspectives with current trends to enhance the impact of commercial and public sector investments in behavioral health. Kana's current responsibilities include helping governments expand access to behavioral health services for adults and children across government-funded and private insurance. She also supports a national partnership in the United States to strengthen community-based suicide prevention and crisis systems. Kana provides strategic guidance on global policy change to facilitate consumer access to prevention, treatment, and recovery services. She also serves as an advisor to payors and other investors considering emerging opportunities in the behavioral health space.



Chip Fisher

Founder & Chairman, Fisher Wallace Labs

Chip Fisher is the Founder and Chairman of Fisher Wallace Laboratories, a medical device company that makes wearable brain stimulation technology, for the treatment of depression, anxiety and insomnia. The company's first generation device, the Fisher Wallace Stimulator, is cleared by the FDA and has been prescribed by over 14,000 providers. OAK, the company's next generation device, is on track for release in Fall 2023. The company is pursuing FDA approval for the treatment of Major Depressive Disorder, and recently completed a pivotal clinical trial to support this new indication.



Matt Klitus, M.B.A.

Chief Growth Officer, Lyra

Matt Klitus is the Chief Growth Officer at Lyra where he oversees corporate development, client services, and provider network operations in service of the company's mission to expand access to life-changing mental health care. Previously, Matt served as President of Markets at Cityblock and CFO/Chief Strategy Officer at MassHealth, the Massachusetts state Medicaid agency. Prior to his government service, Matt worked as a health care investor at General Catalyst and Bain Capital, and began his career at McKinsey. He holds an MBA from Harvard Business School and an AB in Chemistry from Princeton University.



Craig Lund, M.B.A.

Co-founder & CEO, Mightier

Craig is the co-founder and CEO of Mightier, a company out of Boston Children's Hospital that uses digital, play-based solutions to solve the pediatric mental health access crisis. Prior to Mightier, Craig was the interim-CEO of Selux Diagnostics, a company transforming antibiotic medicine, and the Chief Commercial Officer of 1366 Technologies, a solar company out of MIT. Craig is a graduate of Dartmouth College and Harvard Business School.



Shifali Singh, Ph.D.

Director, Digital Cognitive Research Program, Mclean

Dr. Shifali Singh is a Clinical Neuropsychologist and the Director of Digital Cognitive Research at McLean Hospital and Harvard Medical School. She is a lecturer at Harvard University, where she teaches courses to undergraduate students relating to technology and mental health. Dr. Singh is also a Venture Associate at Aphelion Capital and the Co-Founder/Chief Scientific Officer of Willow Health, a digital mental health startup.



Mike Suiters, M.B.A.

Co-founder & CEO, Positive Development

Mike is co-founder and CEO of Positive Development, a provider of affordable, holistic, and effective support for children with autism and related learning differences and their families. Previously Mike was a venture capital and growth equity investor at the Blue Venture Fund and Sandbox Industries, an early employee of Evolent Health, and a management consultant at Deloitte. Mike is a graduate of Davidson College (BA) and Wharton (MBA).



PANEL 7 2:20-3:10PM | ALDRICH 208

PAYERS & PROVIDERS



Leemore Dafny, Ph.D. (Moderator)

Professor of Business Administration, Harvard Business School

Leemore Dafny is the Bruce V. Rauner Professor of Business Administration at the Harvard Business School. Professor Dafny also serves on the faculties of the John F. Kennedy School of Government and the interdisciplinary Program in Health Policy. Professor Dafny's research examines competitive interactions among payers and providers of healthcare services, and the intersection of industry and public policy. Her work has been published in academic journals such as *The American Economic Review* and *The New England Journal of Medicine*, and featured in popular media such as *The New York Times* and *The Wall Street Journal*. Her current projects include studies of prescription drug assistance and coupon programs, organizational structure of the healthcare sector, policy proposals to optimize and contain healthcare spending, and employer-sponsored health insurance. Professor Dafny graduated summa cum laude from Harvard College and worked as a consultant with McKinsey & Company prior to earning her PhD in economics from the Massachusetts Institute of Technology. Professor Dafny is a research associate of the National Bureau of Economic Research, an associate editor of *Management Science*, on the editorial board of *American Economic Journal: Policy*, and recently completed terms on the boards of the American Society of Health Economists and the Health Care Cost Institute.



Alastair Bell, M.D., M.B.A.

Chief Operating Officer & Chief Strategy Officer, Boston Medical Center

Dr. Alastair Bell, is the executive vice president and chief operating officer of the Boston Medical Center Health System (BMCHS), a private not-for-profit health system dedicated to vulnerable and underserved populations. He is leading the health system's transition to accountable care and its innovative work in payment reform, population health, and the social determinants of health. Prior to joining BMCHS, Alastair spent 5 years in McKinsey & Company's healthcare practice and earned an MBA from Harvard Business School and a medical degree from the University of Oxford.



Sean Cavanaugh, M.P.H.

Chief Policy Officer & Chief Commercial Officer, Aledade

Sean Cavanaugh is the Chief Commercial Officer and Chief Policy Officer at Aledade, which partners with independent practices, health centers, and clinics to succeed in value-based care. Sean previously served as the Deputy Administrator and Director of the Center for Medicare at the Centers for Medicare & Medicaid Services, where he was responsible for overseeing the regulation and payment of Medicare fee-for-service providers, privately-administered Medicare Advantage plans, and the Medicare prescription drug program. Prior to that, Sean was the Deputy Director for Programs and Policy in the Center for Medicare and Medicaid Innovation, where he was responsible for overseeing the development and testing of new payment and service delivery models, including ACOs and medical homes. He has also served in senior positions at the United Hospital Fund, Lutheran Healthcare, the New York City Mayor's Office of Health Insurance Access, the Maryland Health Services Cost Review Commission, and the office of then-US Representative Ben Cardin. He attended the University of Pennsylvania and the Johns Hopkins School of Hygiene and Public Health



Vivek Garg, M.D., M.B.A.

Chief Medical Officer & SVP, Primary Care, Humana

Vivek Garg is a physician & executive dedicated to building the models & cultures of care we need for loved ones and healthcare professionals to thrive. He leads national clinical strategy & excellence, care model development & innovation, and the clinical teams for Humana's Primary Care Organization, CenterWell & Conviva, as Chief Medical Officer (CMO), where we serve ~250,000 seniors across the country as their community-based primary care home, with a physician-led team of practitioners, including advanced practice clinicians, nurses, social workers, pharmacists, and therapists. Dr. Garg is the former Chief Medical Officer of CareMore & Aspire Health, innovative integrated health care delivery organizations with over 180,000 patients in over thirty states. He also previously led CareMore's growth & product functions as Chief Product Officer, including expansion into Medicaid primary care and home-based complex care. Earlier in his career, Dr. Garg joined Oscar Health during its first year of operations as Medical Director and led care management, utilization management, pharmacy, and quality, leading to Oscar's initial NCQA accreditation. He was Medical Director at One Medical Group, focusing on primary care quality & virtual care, and worked at the Medicare Payment Advisory Commission, a Congressional advisory body on payment innovation in Medicare. Dr. Garg graduated summa cum laude from Yale University with a BS in Biology and earned his MD from Harvard Medical School and MBA from Harvard Business School. He trained in internal medicine at Brigham & Women's Hospital, received board certification, and resides in New Jersey with his wife, son, and daughter.



Ananth Lalithakumar, M.B.A.

Co-founder, Firsthand

Ananth is a Co-founder at Firsthand, an organization working to scale community-based care for patients with serious mental illness through population-based payment models. Prior to firsthand he served as leader of Medicare Advantage product line at Oscar health. He was also Corporate Vice President of Business Development at Centene, a \$70B leader in Medicaid, Exchange and Medicare company, he orchestrated and executed provider partnerships and Joint Ventures. Prior to assuming the business development role, he led Centene's value-based purchasing strategy migrating 55% of its medical spend into value-based programs, and developed organizational, IT and analytics infrastructure to administer them. Prior to joining Centene, Ananth was a consultant at McKinsey & Company focused on serving payor and provider clients. During his time at McKinsey he led multiple strategy and large-scale transformation programs. Prior to McKinsey, Ananth worked for Infosys technologies, where he helped Aetna automate their claims platform and optimize their claim and call center operations. Ananth holds an MBA from Carnegie Mellon University and B.Tech from Indian Institute of Technology.



Sukanya Soderland, M.B.A.

Chief Strategy Officer, BCBS Massachusetts

Sukanya Lahiri Soderland is Chief Strategy Officer and Senior Vice President of Strategy, Innovation, Enterprise Data & Analytics and Business Performance and Process Improvement for Blue Cross Blue Shield of Massachusetts. Prior to joining Blue Cross, she served as a senior Partner in their Health and Life Sciences Practice, co-founded the Oliver Wyman Health Innovation Center, and was the lead health care Partner in Oliver Wyman's Digital, Technology, Operations & Analytics Practice. She is a frequent speaker in national forums on healthcare transformation and serves on the boards of the Trustees of Reservations, Podometrics, and the board of museum advisors for the Museum of Science. Sukanya holds an MBA from Harvard Business School and a bachelor of arts degree, *magna cum laude*, from Harvard College.



PANEL 8 2:20-3:10PM | ALDRICH 209

ENTREPRENEURSHIP & INVESTING



Malcolm Baker, Ph.D. (Moderator)

Robert G. Kirby Professor of Business Administration, Harvard Business School

Malcolm Baker is the Robert G. Kirby Professor of Business Administration at the Harvard Business School, where he currently teaches finance in the required curriculum. His research is in the areas of behavioral finance, corporate finance, and capital markets, with a primary focus on the interactions among corporate finance, investor behavior, and inefficiency in capital markets. Professor Baker has made numerous presentations to academic and practitioner audiences. His research awards include the Brattle Prize, given annually by the American Finance Association to the best corporate finance paper in the *Journal of Finance*, second place for the Jensen Prize, given annually by the *Journal of Financial Economics*, the Sharpe Award, given annually by the *Journal of Financial and Quantitative Analysis*, and the Graham and Dodd Scroll, given annually by the *Financial Analysts Journal*.



Ian Chiang, M.B.A.

Partner, Flare

Ian is a Partner at Flare Capital Partners. Prior to joining Flare Capital, Ian served as a Senior Vice President and a founding member of CareAllies, Cigna's family of multi-payer provider services, population health management, and home-based care businesses.



Steve Kraus, M.B.A.

Managing Director, Bessemer Venture Partner

Steve Kraus is a partner at Bessemer in the Cambridge office and a world-renowned healthcare investor. He is the author of Bessemer's 10 Laws of Healthcare, Benchmarks for Growing Health tech Businesses, and is a co-host of A Healthy Dose podcast.



Michael Miltenberger, M.B.A.

Principal, Advent International

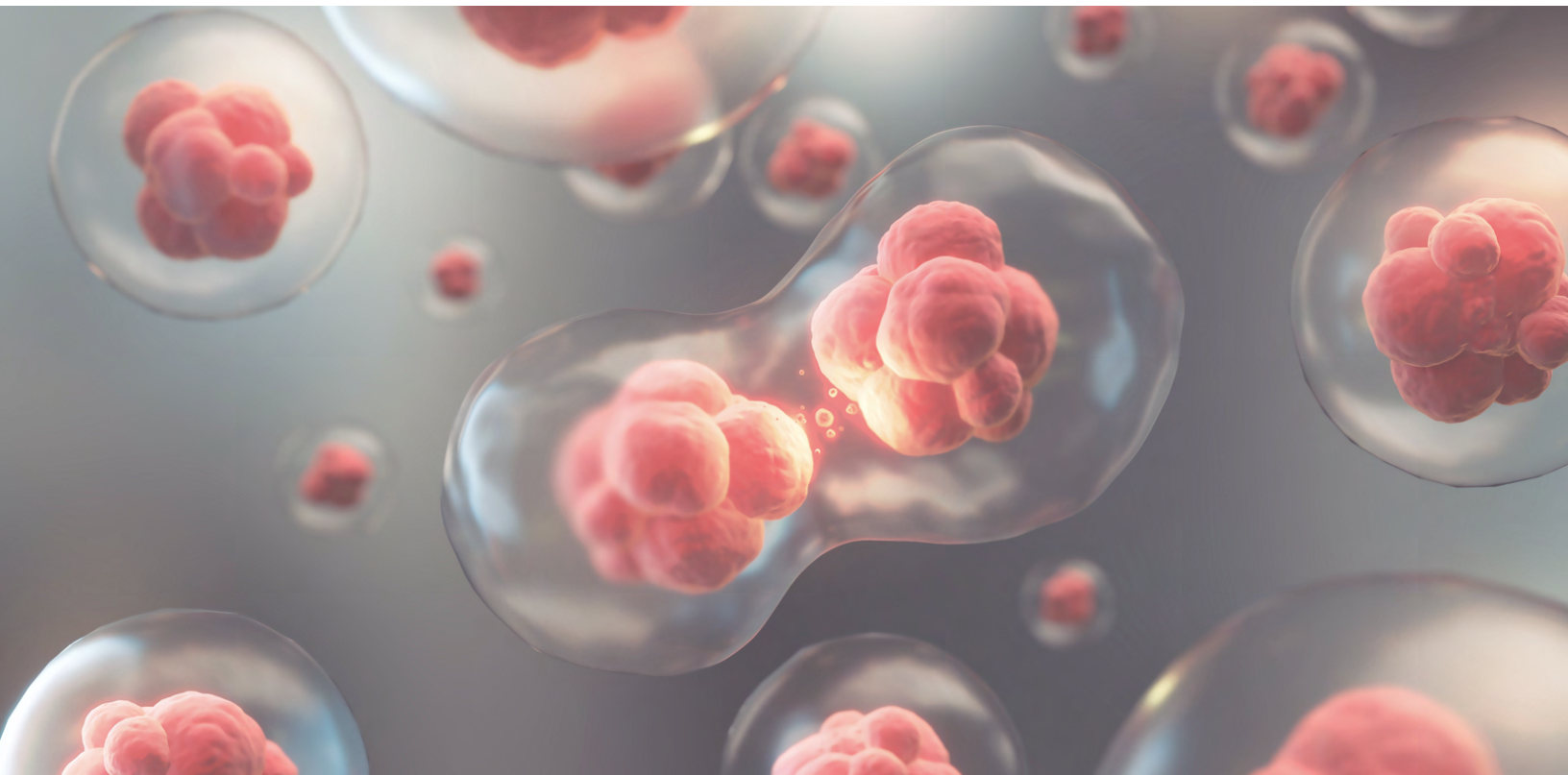
Mike is a Principal at Advent International, a global private equity firm, where he focuses on investments in healthcare technology, pharmaceuticals, and healthcare services. Prior to Advent, Mike was a consultant at McKinsey & Company in their Washington DC office, serving a range of healthcare and private equity clients.



Uciane Scarlett, Ph.D.

Principal, MPM Capital

Dr. Uciane Scarlett is responsible for investment identification, due diligence, business development and new company creation activities at MPM and BioImpact Capital, an affiliate manager of MPM. Prior to joining MPM and BioImpact Capital, Uciane was a Principal at Oxford Sciences Enterprise (OSI, UK), an Oxford-affiliated firm, where she initially co-led the life science sector.



PANEL 9 2:10-3:00PM | ALDRICH 211

AGING & REGENERATIVE BIOLOGY



Amy Wagers, Ph.D. (Moderator)

Professor, Investigator, Co-founder, Harvard University

Amy Wagers is the Forst Family Professor of Stem Cell and Regenerative Biology at Harvard University, Senior Investigator in the Section on Islet Cell and Regenerative Biology at the Joslin Diabetes Center, Co-chair of the department of Stem Cell and Regenerative Biology at Harvard, an HHMI Early Career Scientist, and a member of the Paul F. Glenn Laboratories for the Biological Mechanisms of Aging at Harvard Medical School. She is also a scientific co-founder of Elevian.



Abby Levy, M.B.A.

Co-Founder, Manager Partner, Primetime Partners

Abby Levy is Managing Partner and Co-Founder of Primetime Partners, an early-stage venture capital fund that invests in and incubates companies related to aging and the experience of older adults. She has most recently also held executive leadership roles at SoulCycle, where she was SVP of Strategy and Growth, and Thrive Global, where she was the company's founding President and worked alongside CEO Ariana Huffington.



Kelsey Moody, Ph.D.

Chief Executive Officer, Ichor

Kelsey Moody is CEO and founder at Ichor Life Sciences, a pre-clinical contract research organization offering services in discovery through pharmacology. He is a drug developer with a focus on aging and aging mechanisms and angel investor in the biotechnology and pharmaceutical sectors.



David Scadden, M.D.

Director, Professor, Co-Founder, Harvard University

David Scadden is the Gerald and Darlene Jordan Professor of Medicine and Professor of Stem Cell and Regenerative Biology at Harvard University. He co-founded and co-directs the Harvard Stem Cell Institute and directs the Center for Regenerative Medicine at Massachusetts General Hospital. He is a physician-scientist who co-founded Fate Therapeutics and Magenta Therapeutics and is a director of Magenta, Agios Pharmaceuticals, and Editas Medicine.

CONFERENCE LEADERSHIP TEAM

Geraldine Pena-Galea

Vincent Defalque

Christina Warner

Shehryar Siddiqui

Alexandre Guiraud

William Mbongo

Daye Kim

Tara Basu Trivedi

Brittany Peck

Shane Fagan

Alec Kingston

Amrit Sandhou

Eva Boal

Clio Meghir

David Clossey

Eni Dervishi

Sunni Roh

Jinal Shah

Paige Bhansali

Matthew Chavez

Rhea Choudhury

Katerina Prastakou

Hannah Truong

Morgan Moncada

Lauren Pue

Susie Wang

Conference Co-Chair

Conference Co-Chair

VP of Operations

Director of Operations

Director of Operations

Director of Operations

VP of Sponsorship

VP of Sponsorship

VP of Communications

Director of Communications

Panel Director: Mental Health

Panel Director: One / Global Health

Panel Director: One / Global Health

Panel Director: Therapeutics and Biotech

Panel Director: Aging and Regenerative Biology

Panel Director: Digital Health and Data

Panel Director: Digital Health and Data

Panel Director: Health Equity and SDOH

Panel Director: Payers and Providers

Panel Director: Entrepreneurship and Investing

Panel Director: Diagnostics and Devices

Panel Director: Diagnostics and Devices

Club Co-President

Club Co-President

Club Treasurer

Content Manager



s simply dummy text of the
typesetting industry. Lorem
ipsum is the industry's standard
dummy text ever since the 1500s, when an
unknown printer took a galley of type and
scrambled it to make a type specimen book.



MEDICINE
HEALTH
TREATMENT
DOCTOR
SURVEY
RECIPES

MEDICINE



Student Clubs of HBS, Inc. - Health
Care Club

Harvard Business School

117 Western Ave.

Boston, MA 02163

www.hbshealthconference.com